

80mm

120mm

**MOER**  
HOME SMART WIRELESS SWITCH

**Tuya**

## Instruction Manual Smart Switch



**English**

WORKS WITH alexa WORKS WITH Google Assistant

WS-B-U01-WH-M5-0C11

• Bitte scannen Sie den QR-Code, um das deutsche Handbuch, das Installationsvideo und die Funktionseinführung zu erhalten

• Escanee el código QR para obtener el manual en español, el video de instalación y la introducción de la función

• Veuillez scanner le code QR pour obtenir le manuel en français, la vidéo d'installation et l'introduction des fonctions

• Отсканируйте QR-код, чтобы получить руководство на русском языке, видео по установке и описание функций

• Scansionare il codice QR per ottenere il manuale in italiano, il video di installazione e la guida alle funzionalità. Video di installazione e funzionalità

• Leia o código QR para obter o manual em português, o vídeo de instalação e a introdução das funções

• Zaskanuj kod QR, aby uzyskać instrukcje, filmy instalacyjne i funkcje

• من فضلك قم بمسح الرمز الإجمالي (QR-code) للحصول على دليل المستخدم باللغة العربية والتفصيلي ووصف الأبعاد

• 請掃描二維碼以獲取中文說明書、安裝視頻及功能介紹

### Product Description

(The newly designed smart switch supports the WiFi protocol and replaces the traditional switch with function of various control modes. Now, a new function has been added to the MOES APP, that is the multi-control connection with other smart switches, and the status of backlight on/off and relay. It is suitable for different decorative styles, and can provide best value for you.)

### Safety Information

Risk of Electric Shock:Electricity can cause personal injury and property damage if handled improperly.If you are not sure about any part of these instructions,please seek professional assistance from a qualified electrician.

### Technical Parameters:

Model: WS-B-U01  
Voltage: 90-240V AC, 50/60Hz  
Max. Current: 10A/Gang; Total 10A  
Wireless Protocol: Wi-Fi 2.4GHz  
Frequency Band:2.412-2.484GHz  
Maximum Radio Transmit Power: <+16dBm

### Warnings:

Turn off the power at the circuit breaker and test that power is off before wiring.

### Installation

**Note:**

- Make sure that the power at the circuit breaker is off before wiring.
- Neutral Wire is required.Confirm the wall box contains a Neutral Wire(typically white).If the wall box don't have a Neutral Wire,please try another location at your home or call a professional electrician to install the switch.
- The wire colors indicated in this manual are the usual colors and may differ in some houses.
- Ensure the wire conductors are securely fastened to each wire.
- Ensure the Wi-Fi signal is steady and normally working before wiring.
- If you don't have any wiring experience,please call a professional electrician.

**Step 1**

- Turn off the circuit breaker and use the electrical tester to test the power.
- Ensure the circuit breaker is off before wiring.

**Attention:**  
Please disconnect the power supply before installing or removing the device for avoiding irreversible damage on the device from the electric current or some unpredictable problems such as lamp flashing.

**Step 2**

- Remove the old switch

**Step 3**

- Remove the switch and pull it away from the wall. Identify Line/Load Wire(Note:The color of your wire may be different from the color shown on the manual.)

**Verify power is off**

- We recommend you remove the faceplate from the old switch and use an electrical tester to test all wires connected to the switch to ensure there is no voltage in the circuit.
- You may need to turn off more than one circuit breaker.

**Step 4**

- Take pictures of the wiring

Follow the wiring diagram to connect the switch wires to the wires in the wall box with the wire conductors.

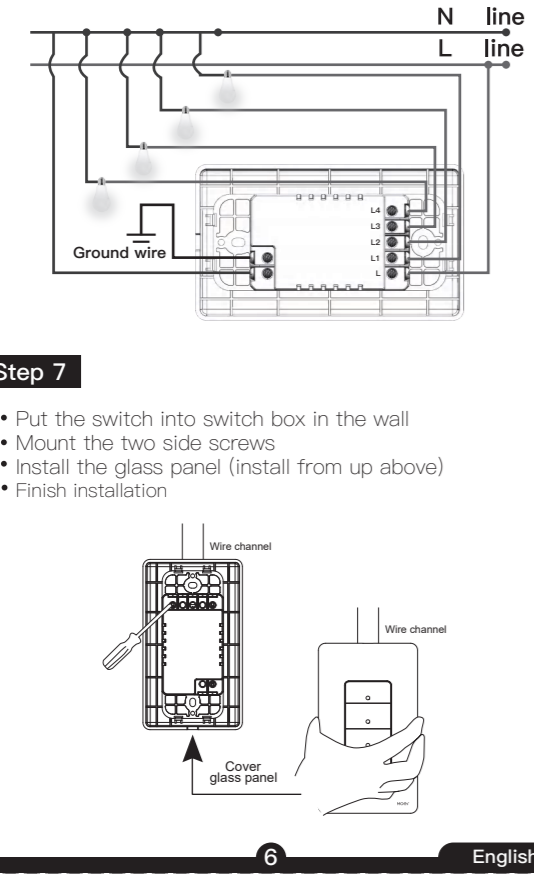
**Step 5**

- Remove the panel with screwdriver (Please don't install with electricity power on)

**Step 6**

- Prepare to install wiring

A. Live wire connects "L" terminal  
B. Neutral wire connects "N" terminal  
C. Lamp wire connects "L1,L2,L3,L4" terminal  
1 Gang connects "L1" terminal  
2 Gang connects "L1,L2" terminal  
3 Gang connects "L1,L2,L3" terminal  
4 Gang connects "L1,L2,L3,L4" terminal



### Download the MOES APP

1. Download MOES App on App store or scan the QR code

2. Registration or Log In

- Download "MOES" Application.
- Enter the Register/Login interface; tap "Register" to create an account by entering your phone number to get verification code and "Set password". Choose "Log in" if you already have a MOES account.

### How to Reset/Re-pair WiFi Device

Long press the switch for 10 seconds until the white indicator on the switch flashes fast and the device will start the network connection mode.

### Wi-Fi link method

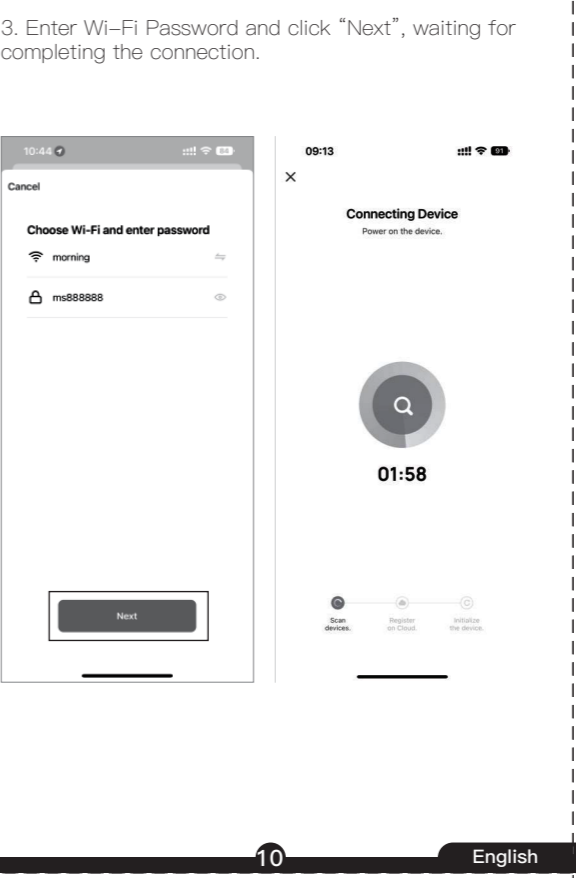
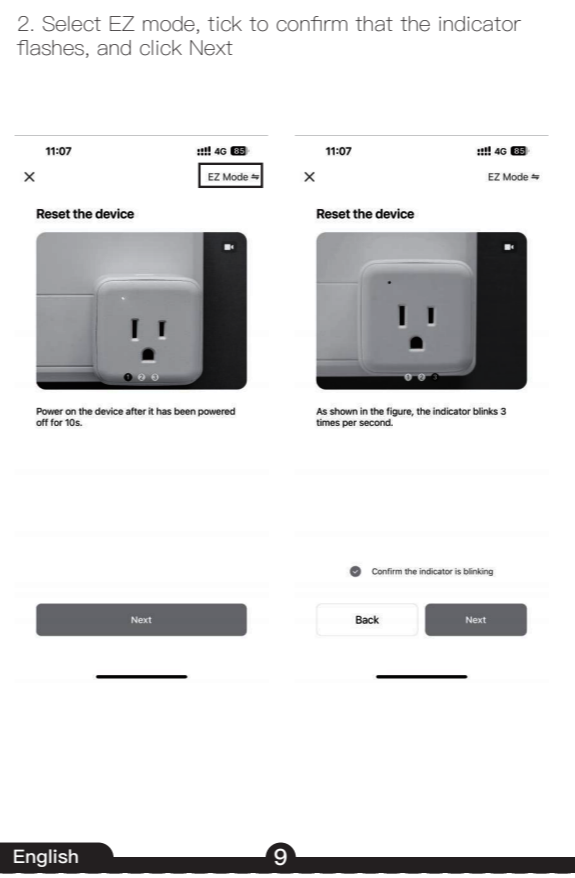
Complete the wiring of the switch module before pairing

**Note:**  
The switch only supports 2.4G network.If you have connected 5G network,please disconnect 5G network firstly and connect 2.4G network.

1. Scan the QR code to configure the network guide.

2. Select EZ mode, tick to confirm that the indicator flashes, and click Next

3. Enter Wi-Fi Password and click "Next", waiting for completing the connection.



4. Select the device you want to add and click "+"

5. Add the device successfully, you can edit the name of the device to enter the device page by click "Done"

6. Click "Done" to enter the device page to enjoy your smart life with home automation.

### How to achieve multi-control association (only for N+L wire)

**Note:** Please confirm you have successfully finished the link method above for adding this switch to your MOES App before the association.

1. Add another smart switch to the same MOES App.(If there is a smart switch having been added before to the app, just go to next step.)

**Note:** If your switch requires a neutral wire, then there is no need to wire the new added switch to the light, only L and N are required for wiring. Then you can control 1 light with multiple switches in MOES App.

If your switch doesn't requires a neutral wire, you need to follow the wiring instructions to connect the L and light. At this point,you can control the lights simultaneously with multiple switches.

2. Then you will see two devices in the app and click the main switch (as one gang switch as below) by entering into the next operation.



4. Choose the switch that you want to associate to and then choose the switch button that you want to control the same light. Then go back to previous page,you will see two items in the page,one is your main switch, the other is the one you associate just now.

**Note: Please confirm the associated switch is enabled.**

5. Now you are able to control your light with two switches. Do not associate another button in the same switch for multi-control.

### Control your home with your voice

Devices are compatible with Amazon Alexa and Google Home supported functionalities. Please see our step-by-step guide on: <https://www.moestech.com/biggs/news/smart-device-linked-voice-speaker>

### SERVICE

Thank you for your trust and support to our products, we will provide you with a two-year worry-free after-sales service (freight is not included), please do not alter this warranty service card, to safeguard your legitimate rights and interests. If you need service or have any questions, please consult the distributor or contact us.

Product quality problems occur within 24 months from the date of receipt, please prepare the product and the packaging, applying for after-sales maintenance in the site or store where you purchase; If the product is damaged due to personal reasons, a certain amount of maintenance fee shall be charged for repair. We have the right to refuse to provide warranty service if:

- Products with damaged appearance, missing LOGO or beyond the service term
- Products that are disassembled, injured, privately repaired, modified or have missing parts
- The circuit is burned or the data cable or power interface is damaged
- Products damaged by foreign matter intrusion (including but not limited to various forms of fluid, sand, dust, soot, etc.)

### RECYCLING INFORMATION

All products marked with the symbol for separate collection of waste electrical and electronic equipment (WEEE Directive 2012/19 / EU) must be disposed of separately from unsorted municipal waste. To protect your health and the environment, this equipment must be disposed of at designated collection points for electrical and electronic equipment designated by the government or local authorities. Correct disposal and recycling will help prevent potential negative consequences for the environment and human health. To find out where these collection points are and how they work, contact the installer or your local authority.

### FCC compliance statement

FCC Compliance Statement for WS-B-U01  
This device complies with Part 15 of the FCC Rules. Operation is subject to the following two conditions: (1) This device may not cause harmful interference, and (2) this device must accept any interference received, including interference that may cause undesired operation.

**Note:** This equipment has been tested and found to comply with the limits for a Class B digital device, pursuant to Part 15 of the FCC Rules. These limits are designed to provide reasonable protection against harmful interference in a residential installation. This equipment generates, uses, and can radiate radio frequency energy and, if not installed and used in accordance with the instructions, may cause harmful interference to radio communications. However, there is no guarantee that interference will not occur in a particular installation. If this equipment does cause harmful interference to radio or television reception, which can be determined by turning the equipment off and on, the user is encouraged to try to correct the interference by one or more of the following measures:

- Reorient or relocate the receiving antenna.
- Increase the separation between the equipment and receiver.

– Connect the equipment into an outlet on a circuit different from that to which the receiver is connected.

– Consult the dealer or an experienced radio/TV technician for help.

This device complies with Part 15 of the FCC Rules. Operation is subject to the following two conditions: (1) This device may not cause harmful interference, and (2) this device must accept any interference received, including interference that may cause undesired operation.

Changes or modifications not expressly approved by the party responsible for compliance could void the user's authority to operate the equipment.

FCC Radiation Exposure Statement:  
This equipment complies with FCC radiation exposure limits set forth for an uncontrolled environment. End users must follow the specific operating instructions for satisfying RF exposure compliance. This transmitter must not be co-located or operating in conjunction with any other antenna or transmitter.

### WARRANTY CARD

**Product Information**

Product Name \_\_\_\_\_  
Product Type \_\_\_\_\_  
Purchase date \_\_\_\_\_  
Warranty Period \_\_\_\_\_

**Dealer Information**

Customer's Name \_\_\_\_\_  
Customer Address \_\_\_\_\_  
Customer Phone \_\_\_\_\_

**Maintenance Records**

| Failure date | Cause Of Issue | Fault Content | Principal |
|--------------|----------------|---------------|-----------|
|              |                |               |           |
|              |                |               |           |
|              |                |               |           |

Thank you for your support and purchase at we Moes, we are always here for your complete satisfaction, just feel free to share your great shopping experience with us.

★★★★★

If you have any other need,please do not hesitate to contact us first,we will try to meet your demand.

**FOLLOW US**

@moessmart MOES.Official  
@moes\_smart @moes\_smart  
@moes\_smart www.moes.net

**EVATOST CONSULTING LTD**  
Address: Suite 11, First Floor, Moy Road Business Centre, Taffs Well, Cardiff, Wales, CF15 7QR  
Tel: +44-292-1680945  
Email: contact@evatmaster.com

**E-CrossStu-GmbH**  
Mainzer Landstr. 69, 60329 Frankfurt am Main  
Email: crossstu@web.de  
Tel: +496932967674  
Made in China

**Manufacturer:**  
WENZHOU NOVA NEW ENERGY CO.,LTD  
Address: Power Science and Technology Innovation Center, NO.238, Wei 11 Road, Yueqing Economic Development Zone, Yueqing, Zhejiang, China  
Tel: +86-577-57186815  
After-sale Service: service@moeshouse.com

### Manual de instalación (Español)

#### Instalación

**Nota:**

- Asegúrese de que la alimentación en el disyuntor esté apagada antes de realizar el cableado.
- Se requiere un cable neutro. Confirme que la caja de pared contiene un cable neutro (generalmente blanco). Si la caja de pared no tiene un cable neutro, pruebe con otra ubicación en su casa o llame a un electricista profesional para instalar el interruptor.
- Los colores de los cables indicados en este manual son los colores habituales y pueden diferir en algunas casas.
- Asegúrese de que los conductores de los cables estén bien sujetos a cada cable.
- Asegúrese de que la señal de Wi-Fi sea estable y funcione normalmente antes de realizar el cableado.
- Si no tiene experiencia en cableado, llame a un electricista profesional.

### Beschreibung des Produkts

(Der neu gestaltete intelligente Schalter unterstützt das WiFi-Protokoll und ersetzt den traditionellen Schalter mit der Funktion der verschiedenen Steuerungsmodi. Jetzt wurde der MOES APP eine neue Funktion hinzugefügt, nämlich die Multisteuerungs-Verbindung mit anderen intelligenten Schaltern und der Status der Hintergrundbeleuchtung ein/aus und des Relais. Es ist geeignet für different dekorative Stile, und kann den besten Wert für Sie bieten).

### Informationen zur Sicherheit

Stromschlaggefahr: Elektrizität kann bei unsachgemäßer Handhabung zu Verletzungen und Sachschäden führen. Wenn Sie sich bei einem Teil dieser Anleitung nicht sicher sind, wenden Sie sich bitte an einen qualifizierten Elektriker.

**Paso 1**

- Apague el disyuntor y use el probador eléctrico para probar la energía.
- Asegúrese de que el disyuntor esté apagado antes de realizar el cableado.

**Atención:**  
Desconecte la fuente de alimentación antes de instalar o quitar el dispositivo para evitar daños irreversibles en el dispositivo debido a la corriente eléctrica o algunos problemas impredecibles, como el parpadear de la lámpara.

**Paso 2**

Quite el viejo interruptor

**Paso 3**

Retire el interruptor y retírelo de la pared. Identifique el cable de línea/carga (Nota: el color de su cable puede ser diferente al color que se muestra en el manual).

**Verifique que la energía esté apagada**

- Le recomendamos quitar la placa frontal del interruptor antiguo y utilizar un probador eléctrico para probar todos los cables conectados al interruptor y asegurarse de que no haya voltaje en el circuito.
- Es posible que deba apagar más de un disyuntor.

**Paso 4**

- Tomé fotografías del cableado.

**Paso 5**

Retire el panel con un destornillador. (Por favor, no lo instale con energía eléctrica encendida.)

**Paso 6**

**Prepárese para instalar el cableado**

A. El cable vivo conecta el terminal "L"  
B. El cable neutro conecta el terminal "N"  
C. El cable de la lámpara conecta el terminal "L1,L2,L3,L4"

1 unidades conecta el terminal "L1"  
2 unidades conectan el terminal "L1, L2"  
3 unidades conectan el terminal "L1, L2, L3"  
4 unidades conectan el terminal "L1, L2, L3, L4"

**Paso 7**

- Coloque el interruptor en la caja de interruptores de la pared.
- Monte los dos tornillos laterales.
- Instale el panel de vidrio (instale desde arriba)
- Terminar la instalación

### Descarga la APLICACIÓN MOES

1. Descargue la aplicación MOES en la tienda de aplicaciones o escanee el código QR

2. Registration or Log in

- Download "MOES" Application.
- Enter the Register/Login interface; tap "Register" to create an account by entering your phone number to get verification code and "Set password". Choose "Log in" if you already have a MOES account.

3. Haga clic en "Listo" para ingresar a la página del dispositivo y disfrutar de su vida inteligente con la automatización del hogar.

### Cómo restablecer/reemparejar un dispositivo WiFi

Mantenga presionado el interruptor durante 10 segundos hasta que el indicador blanco del interruptor parpadee rápidamente y el dispositivo iniciará el modo de conexión de red.

### Método de enlace Wi-Fi

Complete el cableado del módulo de interruptor antes del emparejamiento.

**Nota:**  
El conmutador solo admite una red 2.4G. Si ha conectado una red 5G, primero desconecte la red 5G y conecte la red 2.4G.

1. Escanee el código QR para configurar la guía de red.

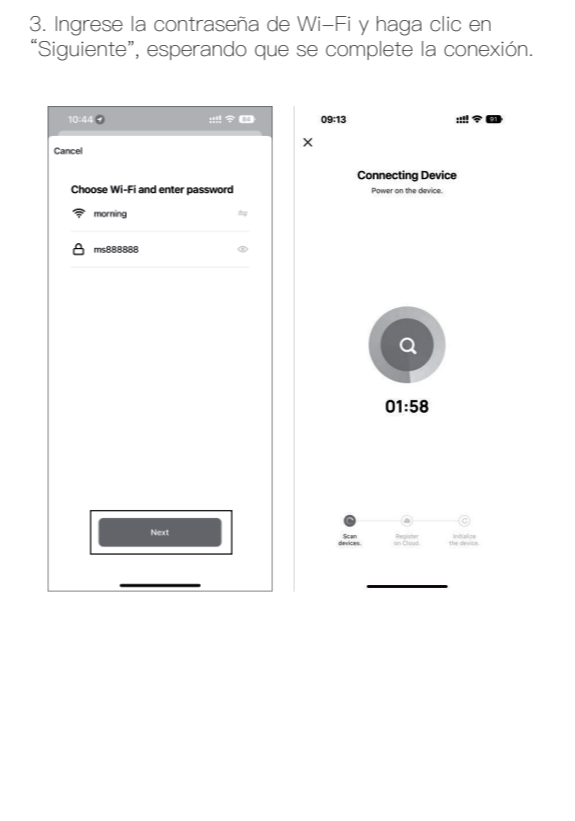
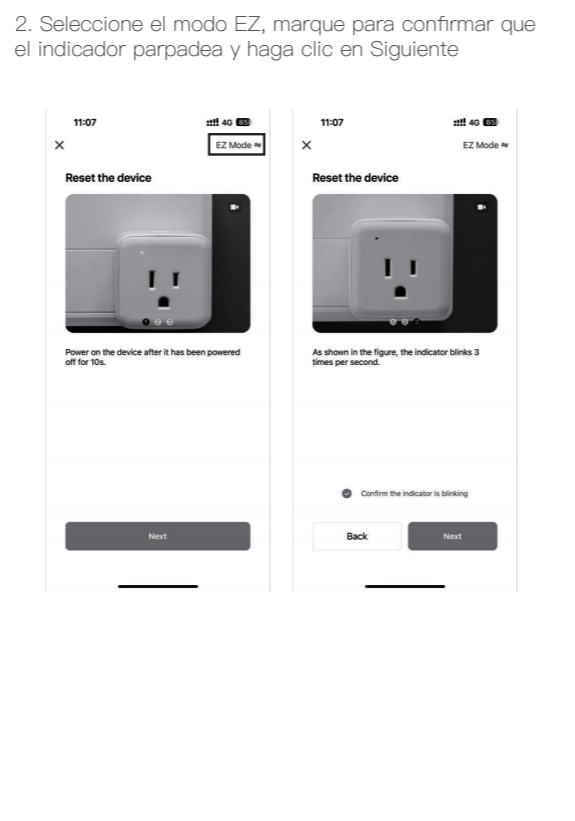
2. Seleccione el modo EZ, marque para confirmar que el indicador parpadeará y haga clic en Siguiente

3. Ingrese la contraseña de Wi-Fi y haga clic en "Siguiente", esperando que se complete la conexión.

4. Seleccione el dispositivo que desea agregar y haga clic en "+"

5. Agregue el dispositivo correctamente, puede editar el nombre del dispositivo para ingresar a la página del dispositivo haciendo clic en "Listo"

6. Haga clic en "Listo" para ingresar a la página del dispositivo y disfrutar de su vida inteligente con la automatización del hogar.



0011